



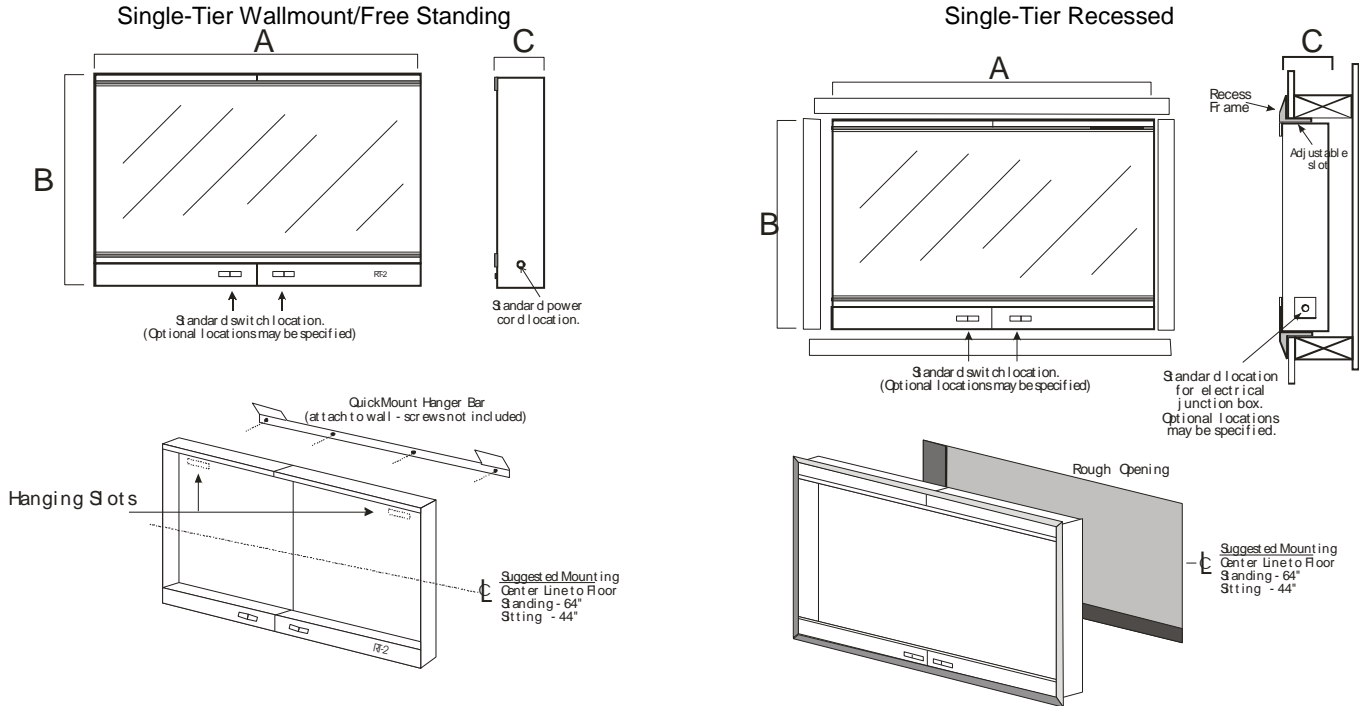
AMD Technologies, Inc.
 218 Bronwood Avenue
 Los Angeles, CA 90049-3104

T 310.470.8900
 T 800.423.3535
 F 310.471.8900

W digitalams.com
 W ams4illuminators.com
 E info@digitalams.com

Drawings and Specifications

PRODUCT: X-Ray Illuminators (Viewboxes)
SERIES: Special Procedure
MODEL(S): SSF, OV and 541
MOUNTING: Wallmount/Free-Standing, Recessed



General Specifications

Housing

Material: CRS
 Construction: Formed steel housing, spot welded
 Finish: Powder coat paint.
 Color: Hospital white.

Electrical

Power Input: 120 Volt, 60Hz
 Line Cord: 6 foot (183cm), 3-prong polarized
 Ballast: Instant on, low-leak, low heat, 1/area. (Other voltages supplied.)

DIMENSIONS AND ELECTRICAL SPECIFICATIONS

Model No.	Description	Width(A)	Height (B)	Depth (C)	ASW*	Amps	Watts
12" x 24 Viewing Areas (Note: Width and Height measurements refer to suggested rough-in dimensions.)							
541D	One-Bank, 12" x 24" viewing area – wall mount	24.625" (62.5cm)	13.5" (34.3cm)	5.75" (14.6cm)	25 lbs. (11.4 kgs)	0.75	40
541R	One-Bank, 14" x 17" viewing area – wall mount	24.875" (63.2cm)	13.75" (34.9cm)	5.75" (14.6cm)	25 lbs. (11.4 kgs)	0.75	40
14" x 36" Viewing Areas (Note: Width and Height measurements refer to suggested rough-in dimensions.)							
501SSF	One-Bank, 14" x 36" viewing area – wall mount	15.625" (35.6cm)	38.375" (97.5cm)	5.625" (14.3cm)	36 lbs. (16.4 kgs)	0.65	60
502SSF	Two-Bank, 14" x 36" viewing area – wall mount	29.625" (75.2cm)	38.375" (97.5cm)	5.625" (14.3cm)	65 lbs. (43.0 kgs)	1.30	120
503SSF	Three-Bank, 14" x 36" viewing area – wall mount	43.625" (110.8cm)	38.375" (97.5cm)	5.625" (14.3cm)	120 lbs. (54.5 kgs)	1.95	180
504SSF	Four-Bank, 14" x 36" viewing area – wall mount	57.625" (146.4cm)	38.375" (97.5cm)	5.625" (14.3cm)	155 lbs. (70.5 kgs)	2.60	240
501SSF-R	One-Bank, 14" x 36" viewing area – recessed	15.875" (36.2cm)	60.5" (153.7cm)	5.625" (14.3cm)	40 lbs. (18.2 kgs)	0.65	60
502SSF-R	Two-Bank, 14" x 36" viewing area – recessed	29.875" (40.3cm)	60.5" (153.7cm)	5.625" (14.3cm)	69 lbs (31.4 kgs)	1.30	120
503SSF-R	Three-Bank, 14" x 36" viewing area – recessed	43.875" (111.4cm)	60.5" (153.7cm)	5.625" (14.3cm)	125 lbs. (56.8 kgs)	1.95	180
504SSF-R	Four-Bank, 14" x 36" viewing area – recessed	57.875" (147.0cm)	60.5" (153.7cm)	5.625" (14.3cm)	160 lbs. (72.7 kgs)	2.60	240
14" x 51" Viewing Areas (Note: Width and Height measurements refer to suggested rough-in dimensions.)							
501OV	One-Bank, 14" x 51" viewing area – wall mount	16.375" (37.4cm)	60.5" (153.7cm)	5.75" (14.6cm)	95 lbs. (43.2 kgs)	2.50	120
502OV	Two-Bank, 14" x 51" viewing area – wall mount	30.375" (77.0cm)	60.5" (153.7cm)	5.75" (14.6cm)	160 lbs. (72.7 kgs)	5.00	240
503OV	Three-Bank, 14" x 51" viewing area – wall mount	44.375" (112.6cm)	60.5" (153.7cm)	5.75" (14.6cm)	240 lbs. (109.1 kgs)	7.50	360
504OV	Four-Bank, 14" x 51" viewing area – wall mount	58.375" (145.2cm)	60.5" (153.7cm)	5.75" (14.6cm)	320 lbs. (145.5 kgs)	10.00	480
501OV-R	One-Bank, 14" x 51" viewing area – recessed	16.625" (38.8cm)	60.75" (154.3cm)	5.75" (14.6cm)	95 lbs. (43.2 kgs)	2.50	120
502OV-R	Two-Bank, 14" x 51" viewing area – recessed	30.625" (78.4cm)	60.75" (154.3cm)	5.75" (14.6cm)	160 lbs. (72.7 kgs)	5.00	240
503OV-R	Three-Bank, 14" x 51" viewing area – recessed	44.625" (114.0cm)	60.75" (154.3cm)	5.75" (14.6cm)	240 lbs. (109.1 kgs)	7.50	360
504OV-R	Four-Bank, 14" x 51" viewing area – recessed	58.625" (147.0cm)	60.75" (154.3cm)	5.75" (14.6cm)	320 lbs. (145.5 kgs)	10.00	480

Lighting

(per 14" x 17" viewing area)
 Two, 15-watt fluorescent daylight lamps.

Luminance

Switches

Location: Clustered center, bottom
 Standard: Rocker type, single
 Optional: Film activated with 3 way rocker (on/off/FAS)



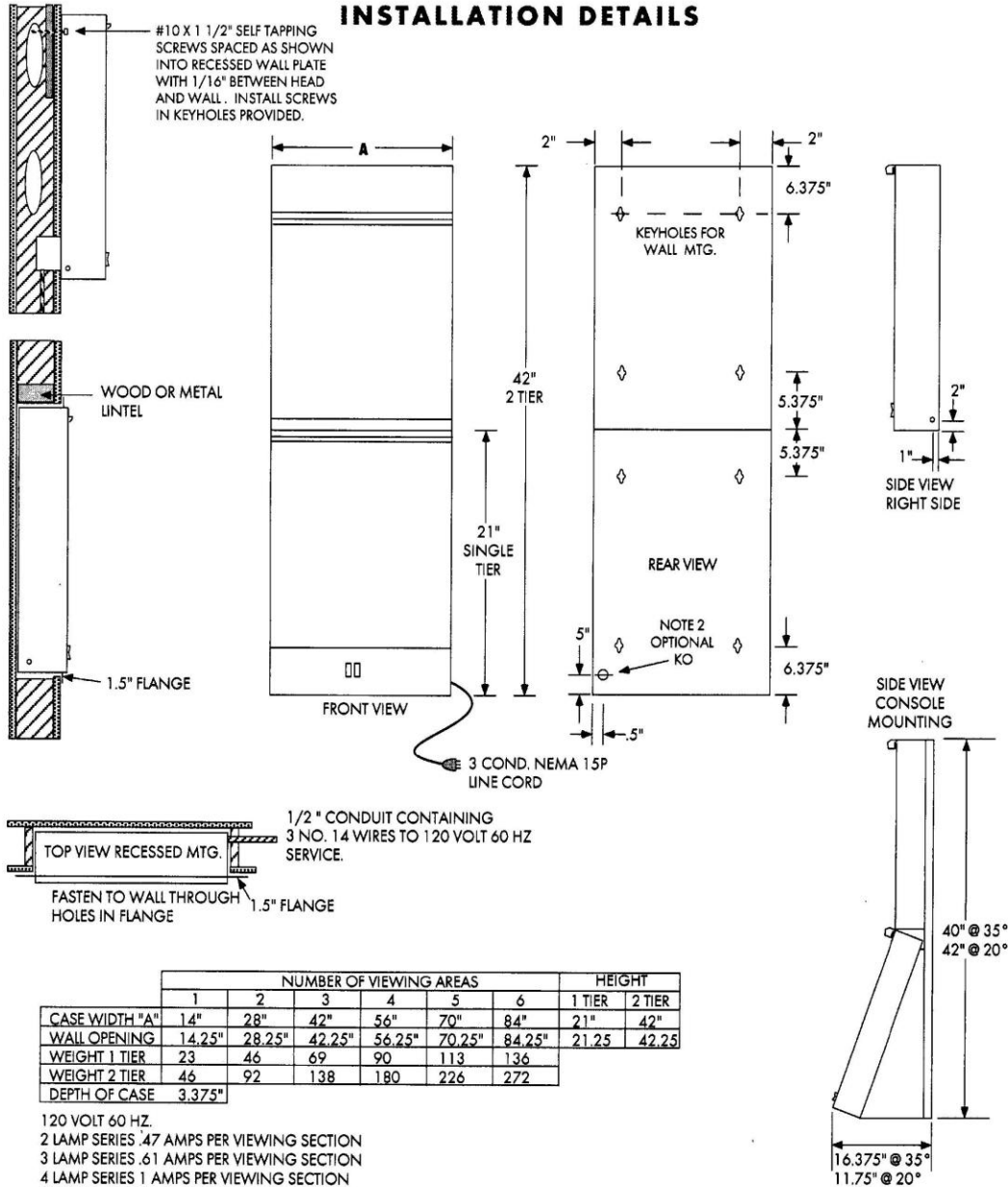
AMD Technologies, Inc.
 218 Bronwood Avenue
 Los Angeles, CA 90049-3104

T 310.470.8900
 T 800.423.3535
 F 310.471.8900

W digitalams.com
 W ams4illuminators.com
 E info@digitalams.com

Drawings and Specifications

PRODUCT: X-Ray Illuminators (Viewboxes)
SERIES: Special Procedure
MODEL(S): SSF, OV and 541
MOUNTING: Wallmount/Free-Standing, Recessed



- NOTE:**
- FOR SAFETY AND PROPER OPERATION UNITS MUST BE ELECTRICALLY GROUNDED. CALL OUR CUSTOM DESIGN ENGINEERING DEPT. FOR HELP WITH ROOM LAYOUTS AND CUSTOM CONFIGURATIONS.
 - PREFERRED LOCATION FOR OPTIONAL JUNCTION BOX. PIGTAILS FROM REAR OF ILLUMINATOR PROVIDED ON REQUEST.



AMD Technologies, Inc.
218 Bronwood Avenue
Los Angeles, CA 90049-3104

T 310.470.8900
T 800.423.3535
F 310.471.8900

W digitalams.com
W ams4illuminators.com
E info@digitalams.com

Drawings and Specifications

PRODUCT: X-Ray Illuminators (Viewboxes)
SERIES: Special Procedure
MODEL(S): SSF, OV and 541
MOUNTING: Wallmount/Free-Standing, Recessed

Installation Guide:

Safety Precautions: Read, understand and follow all instructions and warnings in this instruction manual as well as those provided with the tools you will use to assemble the unit, as well as the accessories you intend use with the unit.

Check for damaged parts. Before assembly, carefully check all parts for possible damage. A part that is damaged should be properly repaired or replaced.

Consider work area environment. Do not use power tools in damp or wet locations. Keep work areas well lit. Do not expose power tools to rain. Do not use tools or chargers in presence of flammable liquids or gases.

Use the right tool. Do not use tools or accessories for purposes not intended. Consult the tool or accessory manual when necessary.

Use safety glasses whenever operating any tool. Always wear eye protection that meets ANSI Z87.1 requirements, plus a face shield wherever possible. Tools must always be properly guarded.

Secure work. Use suitable means to secure parts that may be heavy when assembling until the unit has been fully assembled.

Replacement parts. Replacement parts are available from AMD Technologies, Inc. Customer Service.

Installation:

1. Check that all switches are in the OFF position before connecting to existing wiring or plugging into a grounded outlet.
2. To mount Wall Mount units to wall secure to the wall in the desired location using screws and hardware appropriate to the wall construction and weight of the illuminator. The distance between the screws must correspond with the key hole openings on the back of the illuminator (see specs page). Leave 1/16" space between the head of the screw and the wall. Carefully hang illuminator on screws.

Care and Maintenance:

For maximum durability do not use corrosive or abrasive materials when cleaning. To keep Plexiglass clean, use an anti-static cleaner such as PlastiKleen with a soft, lint-free cloth.

Replacing Bulbs: To replace bulbs, disconnect unit from power source. Carefully unscrew and remove the gravity grip film holder, and lift out the Plexiglass panel. Remove the old bulbs and install new ones, then carefully replace the Plexiglass and gravity grip. With average usage, bulbs should be replaced annually. Since bulb color can vary slightly between lots, should a bulb blow out, all bulbs in the illuminator should be replaced at the same time.

NOTE: Fluorescent bulbs contain Mercury (Hg). Dispose according to local, state and federal law. See www.lamprecycle.org for more information.

Troubleshooting

If a section does not light up when plugged in and turned on:

1. Switch bulbs with a section that is working.
2. Switch ballasts with a section that is working.
3. Check wiring to be sure everything is connected properly.

Always be sure to disconnect illuminator from power source prior to opening.