



AMD Technologies, Inc.
 218 Bronwood Avenue
 Los Angeles, CA 90049-3104

T 310.471.8900
 T 800.423.3535
 F 310.471.8900

W digitalams.com
 W ams4illuminators.com
 E info@digitalams.com

Drawings and Specifications

PRODUCT: X-Ray Illuminators (Viewboxes)
SERIES: 8"x10" and 10"x12" (18x24cm and 24x30cm) Film Formats
MODEL(S): All "300" and "400" Series
MOUNTING: Wallmount/Free-Standing, Recessed, Consolemount

General Specifications

Housing

Material: CRS
 Construction: Formed steel housing, spot welded
 Finish: Powder coat paint
 Color: Hospital white

Electrical

Power Input: 120 Volt, 60Hz
 Line Cord: 6 foot (183cm), 3-prong polarized
 Ballast: Instant on, low-leak, low heat, 1/area (Other voltages supplied.)

Lighting

(per viewing area)
 Two, 14-watt fluorescent daylight lamps

Luminance

Switches

Location: Clustered center, bottom
 Standard: Rocker type, single
 Optional: Film activated with 3 way rocker (on/off/FAS)

DIMENSIONS AND ELECTRICAL SPECIFICATIONS

8" x 10" (18x24cm) Film Viewing Formats

<u>Model No.</u>	<u>Description</u>	<u>Width(A)</u>	<u>Height (B)</u>	<u>Depth (C)</u>	<u>ASW*</u>
Free-Standing/Wallmounts – Single-Tier					
301D	One-Bank, 1 14" x 17" viewing area	8" (20.3cm)	16" (40.6cm)	4.375"(11.1cm)	17 lbs. (7.7 kgs)
302D	Two-Bank, 2 14" x 17" viewing areas	15 1/8" (38.4cm)	16" (40.6cm)	4.375"(11.1cm)	34 lbs. (15.5 kgs)
303D	Three-Bank, 3 14" x 17" viewing areas	22 3/8" (56.8cm)	16" (40.6cm)	4.375"(11.1cm)	51 lbs. (23.2 kgs)
304D	Four-Bank, 4 14" x 17" viewing areas	29 3/8" (74.6cm)	16" (40.6cm)	4.375"(11.1cm)	68 lbs. (30.9 kgs)
305D	Five-Bank, 5 14" x 17" viewing areas	36 3/8" (92.4cm)	16" (40.6cm)	4.375"(11.1cm)	85 lbs. (38.6 kgs)
306D	Six-Bank, 6 14" x 17" viewing areas	43 1/2" (110.5cm)	16" (40.6cm)	4.375"(11.1cm)	102 lbs. (46.4 kgs)
Free-Standing/Wallmounts – Two-Tier					
321D	One-over-One, 2 14" x 17" viewing areas	8" (20.3cm)	32" (81.2cm)	4.375"(11.1cm)	34 lbs. (15.5 kgs)
322D	Two-over-Two, 4 14" x 17" viewing areas	15 1/8" (38.4cm)	32" (81.2cm)	4.375"(11.1cm)	68 lbs. (30.9 kgs)
323D	Three-over-Three, 6 14" x 17" viewing areas	22 3/8" (56.8cm)	32" (81.2cm)	4.375"(11.1cm)	102 lbs. (46.4 kgs)
324D	Four-over-Four, 8 14" x 17" viewing areas	29 3/8" (74.6cm)	32" (81.2cm)	4.375"(11.1cm)	136 lbs. (61.8 kgs)
325D	Five-over-Five, 10 14" x 17" viewing areas	36 3/8" (92.4cm)	32" (81.2cm)	4.375"(11.1cm)	170 lbs. (77.3 kgs)
326D	Six-over-Six, 12 14" x 17" viewing areas	43 1/2" (110.5cm)	32" (81.2cm)	4.375"(11.1cm)	204 lbs. (92.7 kgs)
Recessed – Single-Tier (Note: Width and Height measurements refer to suggested rough-in dimensions.)					
301R	One-Bank, 1 14" x 17" viewing area	8 1/4" (21.0cm)	16.25" (41.3cm)	4.375"(11.1cm)	17 lbs. (7.7 kgs)
302R	Two-Bank, 2 14" x 17" viewing areas	15 3/8" (39.1cm)	16.25" (41.3cm)	4.375"(11.1cm)	34 lbs. (15.5 kgs)
303R	Three-Bank, 3 14" x 17" viewing areas	22 1/2" (57.2cm)	16.25" (41.3cm)	4.375"(11.1cm)	51 lbs. (23.2 kgs)
304R	Four-Bank, 4 14" x 17" viewing areas	29 1/2" (74.9cm)	16.25" (41.3cm)	4.375"(11.1cm)	68 lbs. (30.9 kgs)
305R	Five-Bank, 5 14" x 17" viewing areas	36 5/8" (93.0cm)	16.25" (41.3cm)	4.375"(11.1cm)	85 lbs. (38.6 kgs)
306R	Six-Bank, 6 14" x 17" viewing areas	43 3/4" (111.1cm)	16.25" (41.3cm)	4.375"(11.1cm)	102 lbs. (46.4 kgs)
Recessed – Two-Tier (Note: Width and Height measurements refer to suggested rough-in dimensions.)					
321R	One-over-One, 2 14" x 17" viewing areas	14.25" (36.2cm)	32.25" (81.9cm)	4.375"(11.1cm)	34 lbs. (15.5 kgs)
322R	Two-over-Two, 4 14" x 17" viewing areas	28.25" (71.7cm)	32.25" (81.9cm)	4.375"(11.1cm)	68 lbs. (30.9 kgs)
323R	Three-over-Three, 6 14" x 17" viewing areas	42.25" (107.4cm)	32.25" (81.9cm)	4.375"(11.1cm)	102 lbs. (46.4 kgs)
324R	Four-over-Four, 8 14" x 17" viewing areas	56.25" (142.9cm)	32.25" (81.9cm)	4.375"(11.1cm)	136 lbs. (61.8 kgs)
325R	Five-over-Five, 10 14" x 17" viewing areas	70.25" (178.5cm)	32.25" (81.9cm)	4.375"(11.1cm)	170 lbs. (77.3 kgs)
326R	Six-over-Six, 12 14" x 17" viewing areas	84.25" (214.1cm)	32.25" (81.9cm)	4.375"(11.1cm)	204 lbs. (92.7 kgs)
Console Mounts – Single-Tier * requires optional console arms at 20 degree angle.					
301CM	One-Bank, 1 14" x 17" viewing area	8" (20.3cm)	16" (40.6cm)	4.375"(11.1cm)	17 lbs. (7.7 kgs)
302CM	Two-Bank, 2 14" x 17" viewing areas	15 1/8" (38.4cm)	16" (40.6cm)	4.375"(11.1cm)	34 lbs. (15.5 kgs)
303CM	Three-Bank, 3 14" x 17" viewing areas	22 3/8" (56.8cm)	16" (40.6cm)	4.375"(11.1cm)	51 lbs. (23.2 kgs)
304CM	Four-Bank, 4 14" x 17" viewing areas	29 3/8" (74.6cm)	16" (40.6cm)	4.375"(11.1cm)	68 lbs. (30.9 kgs)
305CM	Five-Bank, 5 14" x 17" viewing areas	36 3/8" (92.4cm)	16" (40.6cm)	4.375"(11.1cm)	85 lbs. (38.6 kgs)
306CM	Six-Bank, 6 14" x 17" viewing areas	43 1/2" (110.5cm)	16" (40.6cm)	4.375"(11.1cm)	102 lbs. (46.4 kgs)
Free-Standing/Wallmounts – Two-Tier * requires optional console arms at 20 degree angle.					
321CM	One-over-One, 2 14" x 17" viewing areas	8" (20.3cm)	32" (81.2cm)	4.375"(11.1cm)	34 lbs. (15.5 kgs)
322CM	Two-over-Two, 4 14" x 17" viewing areas	15 1/8" (38.4cm)	32" (81.2cm)	4.375"(11.1cm)	68 lbs. (30.9 kgs)
323CM	Three-over-Three, 6 14" x 17" viewing areas	22 3/8" (56.8cm)	32" (81.2cm)	4.375"(11.1cm)	102 lbs. (46.4 kgs)
324CM	Four-over-Four, 8 14" x 17" viewing areas	29 3/8" (74.6cm)	32" (81.2cm)	4.375"(11.1cm)	136 lbs. (61.8 kgs)
325CM	Five-over-Five, 10 14" x 17" viewing areas	36 3/8" (92.4cm)	32" (81.2cm)	4.375"(11.1cm)	170 lbs. (77.3 kgs)
326CM	Six-over-Six, 12 14" x 17" viewing areas	43 1/2" (110.5cm)	32" (81.2cm)	4.375"(11.1cm)	204 lbs. (92.7 kgs)

8" x 10" (18x24cm) Film Viewing Formats

<u>Model No.</u>	<u>Description</u>	<u>Width(A)</u>	<u>Height (B)</u>	<u>Depth (C)</u>	<u>ASW*</u>
Free-Standing/Wallmounts – Single-Tier					
401D	One-Bank, 1 14" x 17" viewing area	10.3/8" (26.5cm)	16" (40.6cm)	4.375"(11.1cm)	21 lbs. (9.5 kgs)
402D	Two-Bank, 2 14" x 17" viewing areas	19.7/8" (50.5cm)	16" (40.6cm)	4.375"(11.1cm)	42 lbs. (19.1 kgs)
403D	Three-Bank, 3 14" x 17" viewing areas	29 3/8" (74.5cm)	16" (40.6cm)	4.375"(11.1cm)	63 lbs. (28.6 kgs)
404D	Four-Bank, 4 14" x 17" viewing areas	38 3/4" (98.4cm)	16" (40.6cm)	4.375"(11.1cm)	84 lbs. (38.2 kgs)
405D	Five-Bank, 5 14" x 17" viewing areas	48 1/8" (122.4cm)	16" (40.6cm)	4.375"(11.1cm)	105 lbs. (47.7 kgs)
406D	Six-Bank, 6 14" x 17" viewing areas	57 5/8" (146.4cm)	16" (40.6cm)	4.375"(11.1cm)	126 lbs. (57.3 kgs)
Free-Standing/Wallmounts – Two-Tier					
421D	One-over-One, 2 14" x 17" viewing areas	10.3/8" (26.5cm)	32" (81.2cm)	4.375"(11.1cm)	42 lbs. (26.5 kgs)
422D	Two-over-Two, 4 14" x 17" viewing areas	19.7/8" (50.5cm)	32" (81.2cm)	4.375"(11.1cm)	84 lbs. (50.5 kgs)
423D	Three-over-Three, 6 14" x 17" viewing areas	29 3/8" (74.5cm)	32" (81.2cm)	4.375"(11.1cm)	126 lbs. (74.5 kgs)



AMD Technologies, Inc.
 218 Bronwood Avenue
 Los Angeles, CA 90049-3104

T 310.471.8900
 T 800.423.3535
 F 310.471.8900

W digitalams.com
 W ams4illuminators.com
 E info@digitalams.com

Drawings and Specifications

PRODUCT: X-Ray Illuminators (Viewboxes)
SERIES: 8"x10" and 10"x12" (18x24cm and 24x30cm) Film Formats
MODEL(S): All "300" and "400" Series
MOUNTING: Wallmount/Free-Standing, Recessed, Consolemount

424D	Four-over-Four, 8 14" x 17" viewing areas	38 3/4" (98.4cm)	32" (81.2cm)	4.375" (11.1cm)	168 lbs. (98.4 kgs)
425D	Five-over-Five, 10 14" x 17" viewing areas	48 1/8" (122.4cm)	32" (81.2cm)	4.375" (11.1cm)	210 lbs. (122.4 kgs)
426D	Six-over-Six, 12 14" x 17" viewing areas	57 5/8" (146.4cm)	32" (81.2cm)	4.375" (11.1cm)	252 lbs. (146.4 kgs)

Recessed – Single-Tier (Note: Width and Height measurements refer to suggested rough-in dimensions.)

401R	One-Bank, 1 14" x 17" viewing area	10.5/8" (27.1cm)	16.25" (41.3cm)	4.375" (11.1cm)	21 lbs. (9.5 kgs)
402R	Two-Bank, 2 14" x 17" viewing areas	20 1/8" (51.1cm)	16.25" (41.3cm)	4.375" (11.1cm)	42 lbs. (19.1 kgs)
403R	Three-Bank, 3 14" x 17" viewing areas	29 5/8" (75.1cm)	16.25" (41.3cm)	4.375" (11.1cm)	63 lbs. (28.6 kgs)
404R	Four-Bank, 4 14" x 17" viewing areas	39" (99.1cm)	16.25" (41.3cm)	4.375" (11.1cm)	84 lbs. (38.2 kgs)
405R	Five-Bank, 5 14" x 17" viewing areas	48 3/8" (123.0cm)	16.25" (41.3cm)	4.375" (11.1cm)	105 lbs. (47.7 kgs)
406R	Six-Bank, 6 14" x 17" viewing areas	57 7/8" (147.0cm)	16.25" (41.3cm)	4.375" (11.1cm)	126 lbs. (57.3 kgs)

Recessed – Two-Tier (Note: Width and Height measurements refer to suggested rough-in dimensions.)

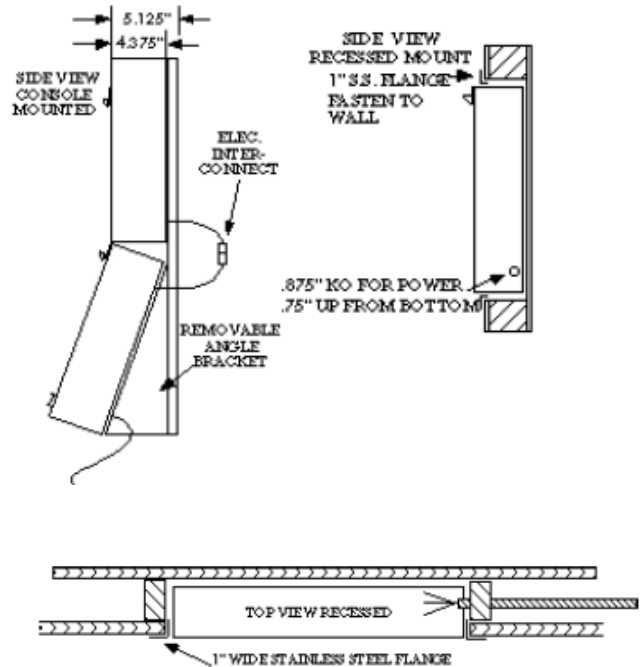
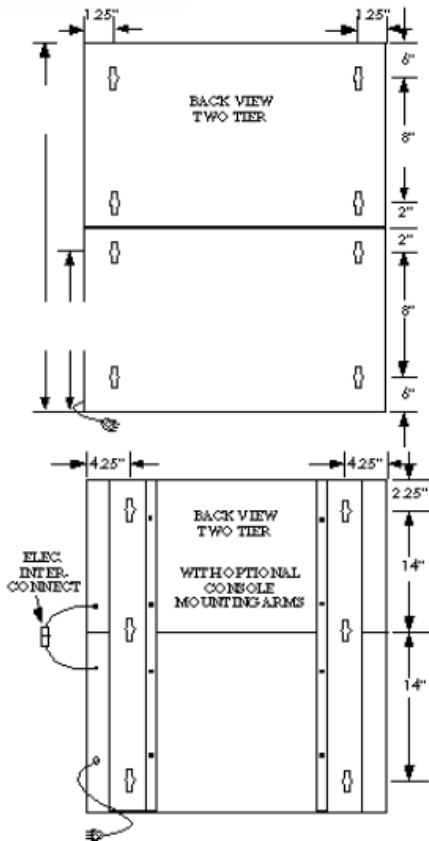
421R	One-over-One, 2 14" x 17" viewing areas	14.25" (36.2cm)	32.25" (81.9cm)	4.375" (11.1cm)	42 lbs. (26.5 kgs)
422R	Two-over-Two, 4 14" x 17" viewing areas	28.25" (71.7cm)	32.25" (81.9cm)	4.375" (11.1cm)	84 lbs. (50.5 kgs)
423R	Three-over-Three, 6 14" x 17" viewing areas	42.25" (107.4cm)	32.25" (81.9cm)	4.375" (11.1cm)	126 lbs. (74.5 kgs)
424R	Four-over-Four, 8 14" x 17" viewing areas	56.25" (142.9cm)	32.25" (81.9cm)	4.375" (11.1cm)	168 lbs. (98.4 kgs)
425R	Five-over-Five, 10 14" x 17" viewing areas	70.25" (178.5cm)	32.25" (81.9cm)	4.375" (11.1cm)	210 lbs. (122.4 kgs)
426R	Six-over-Six, 12 14" x 17" viewing areas	84.25" (214.1cm)	32.25" (81.9cm)	4.375" (11.1cm)	252 lbs. (146.4 kgs)

Console Mounts – Single-Tier * requires optioanl console arms at 20 degree angle.

401CM	One-Bank, 1 14" x 17" viewing area	10.3/8" (26.5cm)	16" (40.6cm)	4.375" (11.1cm)	21 lbs. (9.5 kgs)
402CM	Two-Bank, 2 14" x 17" viewing areas	19.7/8" (50.5cm)	16" (40.6cm)	4.375" (11.1cm)	42 lbs. (19.1 kgs)
403CM	Three-Bank, 3 14" x 17" viewing areas	29 3/8" (74.5cm)	16" (40.6cm)	4.375" (11.1cm)	63 lbs. (28.6 kgs)
404CM	Four-Bank, 4 14" x 17" viewing areas	38 3/4" (98.4cm)	16" (40.6cm)	4.375" (11.1cm)	84 lbs. (38.2 kgs)
405CM	Five-Bank, 5 14" x 17" viewing areas	48 1/8" (122.4cm)	16" (40.6cm)	4.375" (11.1cm)	105 lbs. (47.7 kgs)
406CM	Six-Bank, 6 14" x 17" viewing areas	57 5/8" (146.4cm)	16" (40.6cm)	4.375" (11.1cm)	126 lbs. (57.3 kgs)

Free-Standing/Wallmounts – Two-Tier * requires optioanl console arms at 20 degree angle.

421CM	One-over-One, 2 14" x 17" viewing areas	10.3/8" (26.5cm)	32" (81.2cm)	4.375" (11.1cm)	42 lbs. (26.5 kgs)
422CM	Two-over-Two, 4 14" x 17" viewing areas	19.7/8" (50.5cm)	32" (81.2cm)	4.375" (11.1cm)	84 lbs. (50.5 kgs)
423CM	Three-over-Three, 6 14" x 17" viewing areas	29 3/8" (74.5cm)	32" (81.2cm)	4.375" (11.1cm)	126 lbs. (74.5 kgs)
424CM	Four-over-Four, 8 14" x 17" viewing areas	38 3/4" (98.4cm)	32" (81.2cm)	4.375" (11.1cm)	168 lbs. (98.4 kgs)
425CM	Five-over-Five, 10 14" x 17" viewing areas	48 1/8" (122.4cm)	32" (81.2cm)	4.375" (11.1cm)	210 lbs. (122.4 kgs)
426CM	Six-over-Six, 12 14" x 17" viewing areas	57 5/8" (146.4cm)	32" (81.2cm)	4.375" (11.1cm)	252 lbs. (146.4 kgs)





AMD Technologies, Inc.
218 Bronwood Avenue
Los Angeles, CA 90049-3104

T 310.471.8900
T 800.423.3535
F 310.471.8900

W digitalams.com
W ams4illuminators.com
E info@digitalams.com

Drawings and Specifications

PRODUCT: X-Ray Illuminators (Viewboxes)
SERIES: 8"x10" and 10"x12" (18x24cm and 24x30cm) Film Formats
MODEL(S): All "300" and "400" Series
MOUNTING: Wallmount/Free-Standing, Recessed, Consolemount

Installation Guide:

Safety Precautions: Read, understand and follow all instructions and warnings in this instruction manual as well as those provided with the tools you will use to assemble the unit, as well as the accessories you intend use with the unit.

Check for damaged parts. Before assembly, carefully check all parts for possible damage. A part that is damaged should be properly repaired or replaced.

Consider work area environment. Do not use power tools in damp or wet locations. Keep work areas well lit. Do not expose power tools to rain. Do not use tools or chargers in presence of flammable liquids or gases.

Use the right tool. Do not use tools or accessories for purposes not intended. Consult the tool or accessory manual when necessary.

Use safety glasses whenever operating any tool. Always wear eye protection that meets ANSI Z87.1 requirements, plus a face shield wherever possible. Tools must always be properly guarded.

Secure work. Use suitable means to secure parts that may be heavy when assembling until the unit has been fully assembled.

Replacement parts. Replacement parts are available from AMD Technologies, Inc. Customer Service.

Installation:

1. Check that all switches are in the OFF position before connecting to existing wiring or plugging into a grounded outlet.
2. To mount Wall Mount units to wall secure to the wall in the desired location using screws and hardware appropriate to the wall construction and weight of the illuminator. The distance between the screws must correspond with the key hole openings on the back of the illuminator (see specs page). Leave 1/16" space between the head of the screw and the wall. Carefully hang illuminator on screws.

Care and Maintenance:

For maximum durability do not use corrosive or abrasive materials when cleaning. To keep Plexiglass clean, use an anti-static cleaner such as PlastiKleen with a soft, lint-free cloth.

Replacing Bulbs: To replace bulbs, disconnect unit from power source. Carefully unscrew and remove the gravity grip film holder, and lift out the Plexiglass panel. Remove the old bulbs and install new ones, then carefully replace the Plexiglass and gravity grip. With average usage, bulbs should be replaced annually. Since bulb color can vary slightly between lots, should a bulb blow out, all bulbs in the illuminator should be replaced at the same time.

NOTE: Fluorescent bulbs contain Mercury (Hg). Dispose according to local, state and federal law. See www.lamprecycle.org for more information.

Troubleshooting

If a section does not light up when plugged in and turned on:

1. Switch bulbs with a section that is working.
2. Switch ballasts with a section that is working.
3. Check wiring to be sure everything is connected properly.

Always be sure to disconnect illuminator from power source prior to opening.